



TRIBUTETM

MANUFACTURED BY SOLARIS

*Custom Designed Therapeutic
Nightwear Garments*

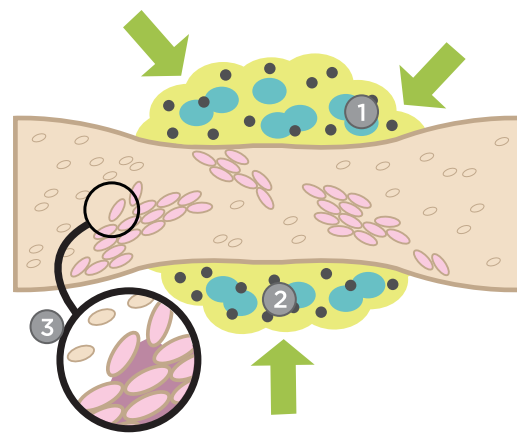
www.LymphedemaDepot.com

WHY IS TRIBUTE ESSENTIAL?

- Maintain gains made in therapy.
- Decrease treatment time.
- Increase patient compliance.
- Treat indurate tissue.
- Stabilize daily fluid fluctuations.
- Simplify the patient's home program.
- Stimulate initial lymphatics.
- Protect limbs and support lax tissue.

HOW DOES TRIBUTE WORK?

1. Foam channels apply directional or bi-directional compression to the tissues.
2. Foam chips nestle into tissue to create localized tissue stretch and pressure differential.
3. Tribute garments create tissue stretch, opening the initial lymphatic gaps to encourage reabsorption of interstitial fluids and particles.



SLEEP WELL AT NIGHT WITH TRIBUTE

When patients order a custom Tribute garment, they receive much more than a nightwear garment. They get the comfort and knowledge that they are purchasing from a company that not only stands by them, but also the lymphedema community. We have several policies, which we offer exclusively to our customers that highlight the Solaris commitment.

Sure-Fit Warranty. Every patient deserves a great fitting garment, so Solaris is proud to provide our customers with our exclusive Sure-Fit Warranty. Within two weeks of shipment, if the garment does not fit as desired, Solaris will alter or remake the garment free of charge.

Alteration Policy. We know that girth reductions are predictable when utilizing Tribute garments, so to better serve your patients, we offer one free alteration to decrease the size of the custom Tribute garment. Sorry we can not enlarge a garment.

One Year Warranty. Each custom Tribute garment is backed by an industry leading one year warranty. This warranty guarantees the garment to be free of manufacturing or material defect for one full year from the date of purchase. If the garment is found to be defective, Solaris will provide the necessary adjustments at no cost to the consumer.

Tiny Tributes Policies. We know that Lymphedema is not limited to adults, so we have developed a special pricing policy exclusively for patients under 14 years of age. A customer may be eligible to receive one free or discounted garment per year based on the patient's age at the time of purchase. For full details about our Tiny Tributes Policies, please call

THE TRIBUTE ADVANTAGE

Unique Patients, Unique Design

Each **Tribute NightWear™ Garment** begins with the core principles of fluid dynamics and lymphatic stimulation. Using our professional experience and dedication, we ensure that every client is provided with the best fitting, most therapeutic product possible. We believe that a successful home program must allow clients with lymphedema an opportunity to become skilled and proficient in their home program. Tribute directional flow garments are designed to meet the needs of the individual patient and custom-made to the medical professional's specifications. Every Tribute is designed to maximize therapeutic results: Chevron style offers bi-directional gradient compression to direct interstitial fluid towards collateral pathways. All Tribute garments provide irregular compression to break up indurate tissue, creating localized tissue stretch to stimulate initial lymphatics.

It's In The Details

Solaris is the only company to commission and utilize sophisticated pressure mapping technology to develop bi-directional flow gradient compression to maximize therapeutic outcomes. We have also conducted many tests in order to determine the most suitable and beneficial fabric for our garments and your patients. Our proprietary fabric ensures tissue health by providing moisture & bacteria management, and thermo release properties to keep the patient cool and comfortable. Tribute garments are easy wear and easy care.

Freedom To Move

Tribute garments not only offer patients therapeutic benefits, but also freedom. Unlike bandaging and other nightwear garments, Tributes allow the patient the comfort of full ROM, which allows them the ability to sleep in their favorite positions.

We're A Part Of Your Team

Our staff is dedicated to working with you to make both your life, and your patient's life, easier.





■ Lower Extremity Garments

A. LE-AB Foot & Ankle Chevron Channel

This garment is intended for clients with edema and/or tissue fibrosis at the foot and/or ankle region. Most commonly ordered with LE-BG-C. Product provides a defined foot sole and ankle definition. Standard heel assist loop is provided to aid donning. Combine with We'a Toe Swell Spot (SP-14) to address tissue fibrosis of individual toes.

B. LE-AD-C Toes to Knee Chevron Channels

Chevron style channels from toes to knee provides bi-directional flow - medial to lateral and distal to proximal. Defined foot and ankle provide enhanced definition and greater comfort. Now featuring a standard heel assist loop to aid donning. Ideal for clients with edema and/or tissue induration at the foot, ankle, and lower leg, particularly if the popliteal lymph nodes have been damaged or removed. Choose this style for patients with ankle skin folds or disproportional ankle to calf girths. Tribute garments provide approx. 28-30 mmHg compression at the ankle. Adding an Outer Jacket (OJ) will increase the compression by approx. 10 mmHg.





C. LE-AD-V **Toes to Knee** **Vertical Channels**

Vertical Channels from toes to knee provides directional flow distal to proximal. This garment is appropriate for clients who have intact lymph nodes, however, exhibit lymphatic insufficiency, edema, or indurated tissue below the knee. Vertical channel style is appropriate for clients with proportional ankle definition. Zipper modification is placed on the anterior seam from ankle to top of garment. Consider adding a Variable Compression Jacket (VCJ) to provide external support and adjustability for clients needing a 24/7 solution. Team with a We'a Toe Swell Spot (SP-14) to provide digit coverage.

D. LE-AF-V **Toes to Mid-Thigh** **Vertical Channels**

Vertical Channels from toes to mid-thigh provides directional flow distal to proximal. This garment style is appropriate for clients who have intact lymph nodes, however, lymphatic insufficiency is suspected, edema, or indurate tissue such as exhibited in Primary Lymphedema. Choose vertical channels if you are directing fluid to the popliteal and inguinal lymph nodes. Zipper modification is placed on the anterior seam from ankle to the top of the garment. Tribute garment provides approx. 28-30 mmHg of compression at the ankle. Outer Jacket (OJ) will increase compression by approx. 10 mmHg.



E. LE-AG-V

Toes to Groin Vertical Channels

Formerly LE-AF-V, this vertical channel style provides distal to proximal gradient compression with coverage from toes to groin. Ideal for clients with edema and/or tissue induration of the leg, particularly if the popliteal and inguinal lymph nodes have NOT been damaged or removed. Choose this style if the therapist is directing lymph fluid along the primary lymph pathway. Please note: this garment provides no hip coverage. An Outer Jacket (OJ) is recommended for clients with a secondary diagnosis of venous insufficiency. Variable Compression Jackets may be worn over this garment to provide 24/7 edema control.

F. LE-AG-C

Toes to Groin Chevron Channels

Formerly LE-AF-C, chevron channel style provides bi-directional gradient flow - medial to lateral and distal to proximal, from toes to groin. Bi-directional gradient follows MLD concepts directing fluid to the collateral lymphatic pathways. This design has been substantially redesigned since it was originally patented. Defined foot and ankle provide enhanced definition and greater comfort. This garment offers lateral hip coverage and now includes a heel assist loop to ease donning. For clients who have skin folds, we recommend that you use Crescent Swell Spots (SP-13) in lobular crevices to support the tissue and aid resolution of indurate tissue.



G. LE-AJ-C **Lower Quadrant Chap** **Chevron Channels**

As therapists predicted, this garment has become the gold standard in the industry, by treating the full lower quadrant. Bi-directional gradient follows MLD concepts, directing fluid to the collateral lymphatic pathways. This design has been substantially redesigned since it was originally patented. Defined foot and ankle provide enhanced definition and greater comfort. The soft and flexible belt is fully adjustable for maximum comfort.

H. LE-AJ-C & LE-EJ-C **Chap and Half Leg** **Chevron Channels**

This garment is appropriate for clients who have full involvement in one quadrant and partial proximal involvement in the contralateral quadrant. You will need to use two leg order forms when ordering this style of garment. Use the Comments section to indicate if the client has a pear, apple, hour-glass, or straight figure shape. The zipper may be placed on the anterior seam to ease donning/doffing.





I. LE-BBJ-C **Pant** **Chevron Channels**

Most closely resembles running pant, with zippers from ankle to knee along the lateral seams; an additional zipper is placed at the front for ease of access. Recommended for those clients with bi-lateral, symmetrical swelling, including the abdomen and buttocks. These are ideal for those clients with normal flexibility and range of motion. We recommend bi-lateral Chaps for clients needing ease of donning. Please use two order forms (one for each leg) and indicate in the comments section if you would prefer to have the zipper close proximal to distal or distal to proximal.

J. LE-BAJ-C **Pant with Foot Coverage** **Chevron Channels**

For clients who need coverage from toes to waist. To aid donning, zippers are placed along the lateral seams. Larger clients may find this garment difficult to wear due to the garments overall weight. If ordering for clients over 250 pounds, please include their current weight and any mobility limitations, so that we can customize this garment further to provide energy conserving modifications and limited reach modifications. Call us to discuss these options. Please use two order forms, one for each leg.





■ Modifications & Additions Lower Extremity Garments

K. LE-OJ Outer Jacket

Outer Jackets are available for all Tribute Lower Extremity units, and provide an additional 10mmHg compression to the total compression exerted on the tissue. Please note: When worn alone, Outer Jackets do not provide gradient compression. Recommended for clients with Mild to Severe Lymphedema, when worn as directed. Not sold separately, Tribute warranty does not apply.

LE-OJ-AD garment shown.

L. LE-VCJ Variable Compression Jackets

Solaris' exclusive Variable Compression Jacket is a viable option in the restorative phase of therapy for the client for whom multi-layer bandaging is problematic. Non-latex foam backing prevents migration when worn over Tribute garments. Velcro® receptive fabric is breathable, wicks moisture, easily laundered and resists binding. Therapists adjust ladder style straps, with limb in neutral position, for proper fit; client uses zipper on the opposite side for daily donning / doffing. Patent pending by Solaris, Inc. Not sold separately. Tribute warranty does not apply.

LE-OJ-AD garment shown.





M. MO-EZ **Easy-Slide**

Easy-Slide reduces the friction between garments and the skin, extends the life of a Tribute garment, and makes donning even easier. Easy-Slide is appropriate for use with all styles of open toe and arm garments (Easy-Slide will not work with We'a Toe Swell Spots). Easy-Slide is a washable donning aid made of 100% nylon.

No need to stress-out choosing a size, we will select the most appropriate size based on the client's measurements.

Easy-Slide is also available for Upper Extremity garments.

N. MO-PL **Pull-up Loop Modification**

Pull-up loops are placed on either side of the garment to assist clients in independent donning. Loops consist of a heavy elastic (low-stretch) reinforcement strap centered on the lateral and medial leg on Vertical Channeled garments. For Chevron Channel style, heel assist loop is standard. For those clients that need to tug and pull, we recommend zippers. Pull-up loops are intended to aid clients with limitations in reach or trunk flexion. If you would like MO-PL, place a check mark on the Tribute order form next to this descriptor.





O. MO-ZP **Zipper Modification** **Vertical Channels**

Zippers allow easy access and decrease pulling on the garment when donning. For Vertical Channel style, garment zippers are placed on the anterior seam; they typically begin at the ankle and end at the top of the garment. When ordering to fit your client's individual needs, please use the Comments section to note customized placement. All zippers are back-set to ensure that delicate skin will not be pinched.

P. MO-ZP **Zipper Modification** **Chevron Channels**

Zippers can be placed on the lateral or medial seam for garments utilizing Chevron Channels. To determine which position will be best for your client, ask them to touch their foot from a seated position. Watch which side they naturally reach towards and indicate this on the order form. Zippers allow easy access and decrease pulling on the garment when donning. They typically begin at the ankle and end mid-thigh in LE-AG-C garments, or run from ankle to knee in LE-AD garments. All zippers are back-set to ensure that delicate skin will not be pinched. When ordering to fit your client's individual needs, please use the Comments section to note customized placement.



Q. MO-V2 **Velcro Modification**

Velcro is placed strategically along the lateral seam of the Chevron Channel Lower-Extremity garments and/or along the anterior seam of the Vertical Channel Lower-Extremity garments. Most commonly requested when clients tuck in Curved Swell Spots at the ankle or when Crescents are placed in skin folds after donning.

Velcro receptive fabric is utilized as the exterior fabric; flaps are segmented to allow adjustability.

R. MO-SO **Non-Skid Foot Pads**

To prevent slipping when walking short distances and to extend garment usage life, foot pads are placed on heel strike and toe lift-off. Non-Skid Foot Pads are not intended to provide a walking sole for extended use. Indicate this modification on the Lower Extremity order form, specifying if you want this modification on the Tribute garment or Outer Jacket.

■ Trunk & Torso Garments



A. TT-JG **Lower Torso** **Vertical Channels**

This unit gives therapeutic coverage for the abdomen, genitals and buttocks. Specifically designed with an extended waist, to cross the transverse plane or watershed, from the lower quadrant to the upper quadrant, and to complement therapeutic manual techniques. Based on customer preference, we now offer this unit with circumferential padding only.

You may want to consider our SP-15 Swell Spot for daytime usage.



B. TT-JF **Shorts** **Chevron or Vertical Channels**

Shorts are ideal for clients who require bandaging of the lower leg, and also need coverage of the buttocks and abdomen. Clients can bandage over the thigh portion or wear biker shorts over top for additional compression. Please remember to note your choice of Vertical (TT-JF-V) or Chevron (TT-JF-C) channels when entering the Product Code onto the Torso Order Form. The zipper modification may be ordered for midline seam to ease donning/doffing.

Chevron Channels are pictured.



C. TT-KH
Abdominal Binder
Vertical Channels

The Abdominal Binder was therapist-designed for a client with breast reconstruction to address swelling, tissue induration, and post-surgical scarring. Since that time, this garment has been made on a regular basis for clients with abdominal concerns. For clients with a rounded abdomen, darting is incorporated to provide full coverage and tissue support. Exterior fabric is Velcro-receptive to allow for girth fluctuations.

D. TT-MK
Thoracic Sling Wrap
Vertical Channels

The asymmetrical thoracic wrap was client-designed specifically for unilateral mastectomy, providing therapeutic relief from chest wall scarring or radiation fibrosis, and/or swelling over the scapula. It is helpful to include the cup size of the unaffected breast in the Comments section when ordering.





E. TT-LH
Bustier
Vertical Channels

A shoulder-less chest garment. This garment is perfect for women with firm breasts who have had lumpectomies, breast reconstruction or augmentation. We recommend that you extend the garment to the hips to cross the waist watershed.

F. TT-NK
Upper Torso/Neck
Vertical Channels

The Dickie has been redesigned to provide circumferential coverage at the level of the axilla. This garment was originally designed to address one client's radiation fibrosis in the neck and over the clavicles. Since then, therapists who have called with similar clients have been offered this design and have helped us refine the style for even better fit and comfort.



G. TT-MH

Vest Vertical Channels

Designed for clients with swelling or tissue fibrosis in the trunk or torso, our vest features vertical channels and a front zipper closure. Clients report therapeutic benefits while wearing this vest over garments as a “fashion item.” Comfortably fits one’s lifestyle while worn at night, while sleeping, or during the day. Now includes adjustable shoulder straps for increased comfort. Clients may choose between a V-neck, Round-neck, Scoop-neck or Turtle-neck. Please indicate style choice in the Comments section of the order form. We will default to the Scoop-neck style shown if you do not indicate another choice.

H. TT-NH

Short Sleeve Shirt Vertical and Chevron Channels

This garment is an example of how we can provide a garment that will meet your client’s needs. Our design staff is available to discuss your ideas and assist you. We have made garments that cover the full body, or provide coverage for the full torso from neck to groin. The torso portion of the garment is created with Vertical Channels, while the sleeves are made with Chevron Channels. Additional garment designs and descriptions are listed on the price sheet. Call us with your ideas.



I. TT-MG **Body Suit** **Vertical Channels**

We have got you covered. This garment provides superior truncal coverage with an easy-to-don design. Client may choose neck style - Scoop-neck (as shown), V-neck, Round-neck, or Turtle-neck. Please indicate neck style choice in the Comments section. Garment leg length may end at the groin level as shown or extend to any point proximal. Detachable arms may be added for full upper body coverage. Call us to discuss your client's needs.

J. TT-MH with TT-JG **Vest shown with Shorts** **Vertical Channels**

Options. We believe in choices. Perhaps your client would prefer to have the option to wear one or the other, depending on their nightly needs. Team the TT-MH with our TT-JG for full torso coverage. Separate garments are easier to wash and dry, and allow flexibility.



■ Upper Extremity Garments



A. UE-AC **Glove** **Vertical Channels**

We've been told by therapists and clients that this is the premier lymphedema/edema glove on the market. Its unique design demonstrates the creative, problem-solving qualities at the core of the Tribute line. Our unique digit pockets cradle the fingers in comfort, while addressing the swelling and fibrosis throughout the hand. Gloves have recently been redesigned to place the thumb in neutral posturing. Easy to size, just trace the client's hand and measure the palm and wrist circumferences.

B. UE-AD **Extended Glove** **Vertical Channels**

Ideal for clients with swelling in the fingers, hand and wrist. You can choose to end the glove mid-forearm (UE-AD) or extend to the elbow (UE-AE). Features Solaris' proprietary digit spacers. Please use both the Hand and the Arm Order Forms when ordering this garment.





C. UE-CG
Wrist to Axilla
Chevron Channels

Perfect therapy for the wrist, elbow, and upper arm. Combine with our Glove Unit for full arm coverage to allow clients the flexibility of removing the hand portion to perform routine activities with ease.



D. UE-CG with UE-AC
Wrist to Axilla with Glove
Vertical and Chevron Channels

This combination has developed a huge following. Clients like the special attention to the fingers and the ability to remove the hand portion as desired. Garments are manufactured together to ensure proper gradient compression.





E. UE-BG

Metacarpals to Axilla Chevron Channels

Designed for those clients that have no swelling in their fingers, but want coverage over the dorsum and palmar surfaces of the hand, or for clients who prefer to individually wrap the fingers. Specify in the Comments section your preference for thumbless or thumb coverage design (as shown). Tribute arm sleeves provide 28-30 mmHg over the wrist, decreasing to 18 mmHg at the axilla when the arm is held in relaxed, neutral posturing.



F. UE-AG

Fingertips to Axilla Chevron Channels

Based on the original patent, Solaris has added advanced construction techniques to create bi-directional gradient compression - distal to proximal, and medial to lateral. Solaris' exclusive high-pressure injection methods further refine this therapeutic sleeve. Clients are encouraged to sleep in a comfortable position with digit flexion, neutral posturing of the wrist and elbow flexion up to 90 degrees. This truly is a garment built for comfort and simplicity of use. An Outer Jacket is appropriate for clients who have a history of night swelling, venous complications or prefer snuggler compression.



G. UE-CI
Wrist to Clavicle
Chevron Channels

For the fully involved client, consider this design with a glove; the finger spacers will address swollen and fibrotic digits. Features shoulder coverage and an adjustable Velcro-receptive chest strap, which is padded for added comfort. When ordering we will need the angular straddle measurement, beginning at the AC joint, crossing the chest to under the arm, then across the back to the AC joint (NL).

H. UE-BI
MCP to Clavicle
Chevron Channels

Finally, a garment that covers the shoulder with a comfortable chest strap. Solaris designed this garment to begin at the metacarpals and fully cover the arm and shoulder cap. The strap is Velcro-receptive and foam-padded for additional comfort. When ordering we will need the angular straddle measurement, beginning at the AC joint, crossing the chest to under the arm, then across the back to the AC joint (NL).





A. UE-AI **Fingertips to Clavicle** **Chevron Channels**

Finally, a garment that covers the shoulder with a comfortable chest strap. Solaris designed this garment to begin at the fingertip and fully cover the arm and shoulder cap. The strap is Velcro-receptive and foam padded for ease of adjustment and comfort. When ordering, we will need the angular straddle measurement, beginning at the AC joint, crossing the chest to under the arm, then across the back to the AC joint (NL). An Outer Jacket is available for this style if your client prefers slightly more compression, or has a history of night swelling or quick refill.

J. UE-AI with TT-BH **Fingertips to Clavicle with Vest** **Vertical and Chevron Channels**

For the fully involved client, Solaris teams a UE-AI with our Vest. Garments attach together with snap-tape or Velcro to allow the client to wear either or both. This type of attachment also makes the garment easier to wash and dry. Unsnap a couple snaps in the axilla to allow greater ROM while sleeping. Standard neck style is shown; however, your client may choose to have a V-neck, Round-neck, Scoop-neck, or Turtle-neck. Please specify neck style in the Comments section of the order form.





■ Modifications & Additions

Upper Extremity Garments

K. UE-OJ Outer Jacket

Solaris Outer Jackets are available for all Tribute arm garments. Outer Jackets add an additional 10 mmHg compression the full length of the unit. Please note: When worn alone, Outer Jackets do not provide gradient compression. Recommended for clients with mild to severe Lymphedema. When worn as directed, can be used to replace bandaging and increase the overall compression to Class 2.

Outer Jackets should be replaced every six months to maintain effectiveness. Not sold separately. Tribute warranty does not apply.

UE-OJ-BG garment shown.

L. UE-OJ Outer Jacket

An example of Solaris' Outer Jackets, which complement our arm units. This Outer Jacket is specifically designed to complement and enhance the shoulder coverage of our UE-BI unit. Proximal garment attaches to the unit's Velcro-receptive strap and increases compression while eliminating bandaging.

Outer Jackets should be replaced every six months to maintain effectiveness. Not sold separately. Tribute warranty does not apply.

UE-OJ-BI garment shown.



M. UE-VCJ-AG **Variable Compression Jacket**

Solaris' exclusive Variable Compression Jacket is a viable option in the restorative phase of therapy for the client for whom multi-layer bandaging is problematic. Non-latex foam backing prevents migration when worn over Tribute garments. Velcro receptive fabric is breathable, wicks moisture, resists binding and launders easily. Therapists adjust lateral straps with limb in neutral position for proper fit; client uses zipper on the opposite side for daily donning/doffing. Patent pending by Solaris, Inc.

N. MO-ZP **Zipper Modification**

To allow easy access and to decrease pulling on the garment when donning, zippers are typically placed to start at the thenar eminence and end at the mid-bicep. All zippers are backset to ensure that delicate skin will not be pinched. To fit your specific client's needs, use the Comments section to customize the zipper placement when ordering.





O. MO-V1 **Velcro Modification**

Clients with minimal muscle strength or brachial plexus neuropathy find it much easier to don Tribute garments with a Velcro opening along the 2nd digit (index finger). This slight modification, makes life simpler for these clients. You may modify the arm garment further by ordering a zipper opening from wrist to mid-bicep.

P. MO-V2 **Velcro Modification**

For clients preferring Velcro opening to zipper opening. Greater coordination and strength is required for self-donning; however, clients who need assistance from a spouse or friend find that this type of open/close modification is slightly easier than a zipper. Velcro modification will limit elbow flexion.





Q. MO-DS **Digit Spacers**

Our proprietary Digit Spacers cradle the fingers in comfort, while addressing finger swelling and tissue induration. Digit Spacers can be placed in garments beginning at the fingertips or DIPs.

R. MO-PL **Pull-up Loops Modification**

Pull-up Loops are placed on the Volar side of the garment to assist clients in independent donning. Loops consist of a heavy elastic (low-stretch) reinforcement strap placed at convenient locations, per your preferences. For those clients that need to tug and pull, we recommend zippers. Pull-up Loops are intended to aid clients with limitations in reach or trunk flexion.





S. MO-CU Custom Zipper Garment

When we say each garment is custom-made, we mean more than just sizing. At Solaris, we individualize our garments to meet the needs and wants of the wearer.

The garment shown above has been modified for clients with brachio-plexus injuries, where there is minimal or absent muscle strength. The zipper has been placed on the top of the arm, fully opening to the PIPs. This garment is laid on a table and opened; the client then positions the flacid arm onto the sleeve. Closure is accomplished by a series of Velcro tabs, which approximate the two edges of the zipper.

T. MO-EZ Easy-Slide

Easy-Slide reduces the friction between garments and the skin. Extend the life of a Tribute garment and make donning even easier. Easy-Slide is appropriate for use with all styles of open toe and arm garments. (Easy-Slide will not work with glove units or arm garments with digit spacers.) Easy-Slide is a washable donning aid made of 100% nylon.

No need to stress out choosing a size. We will select the most appropriate sized based on the client's measurements.

Easy-Slide is also available for Lower Extremity garments.

■ Head & Neck Garments



A. FN-CC **Cervical Collar** **Vertical Channels**

So simple, yet so needed. The Cervical Collar has been requested by therapists working with clients who have thickened tissue due to radiation or post-surgical scarring. The collar is designed to fit the contours of the neck.

B. FN-OR **Orbital Unit** **Horizontal Channels**

When swelling develops around the eyes and in the eye lids, this Orbital Unit provides an effective solution. This garment is a custom version of our Swell Spot Versi-Face (SP-10). For absolute fit, mail us a thermo-plastic mold of the upper face. We will create an exterior pocket and trim the mold to fit proportionally. The client dons the mask with the mold to perfectly fit the delicate and intricate contours of the eyes and nose.





C. FN-MA
Mandibular Unit
Chevron Channels

Coverage for the neck and the lower half of the face. Adjustable straps at back of neck and crown of head. Can be modified to have soft, snap opening down chin and neck for trachea tubes. Request a Lip Bridge to provide greater definition to the cheeks and coverage over the upper lip. Exterior fabric is Velcro-receptive.

D. FN-MA & FN-OR with Lip Bridge
Mandibular / Orbital Unit
and Lip Bridge

When full facial coverage is needed, we suggest combining the Mandibular Unit and the Orbital Unit. This combination has been very tolerable for even those clients who are concerned about feeling claustrophobic. Lip Bridge provides greater definition to the cheeks and coverage over the upper lip. Exterior fabric is Velcro-receptive.



TRIBUTE

MANUFACTURED BY SOLARIS

Custom Designed Therapeutic Nightwear Garments

SOLARIS
FREEDOM TO LIVE



Distributed in Canada exclusively by:



12-111 Fourth Ave., Suite 347, St. Catharines, ON L2S 3P5

TEL: (905) 687-8500 | FAX: (905) 687-8224

Info@LymphedemaDepot.com | www.LymphedemaDepot.com