



CARESIA™

MANUFACTURED BY SOLARIS

*Standard Size
Bandage Liners*



Distributed in Canada by

**LYMPHEDEMA
DEPOT LTD**

www.LymphedemaDepot.com

What is Caresia?

Caresia Bandage Liners are standard-sized bandage liners, which simplify complex multi-layered bandaging protocols, while enhancing therapeutic outcomes in the active phase of therapy.

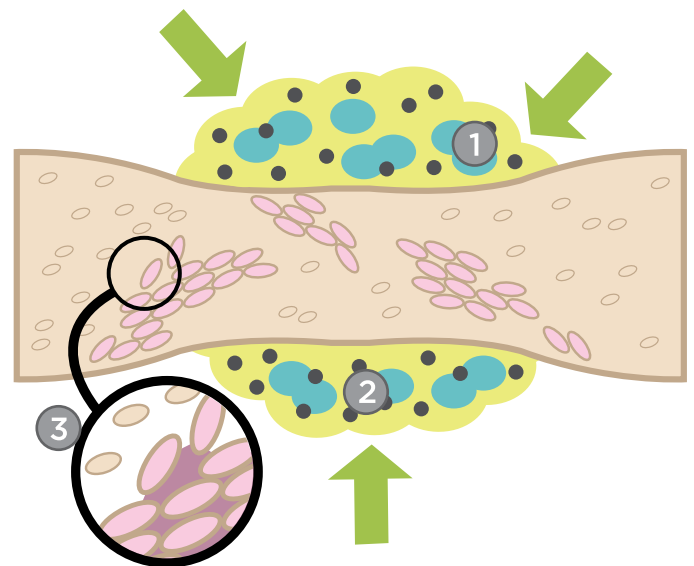
Caresia Bandage Liners replace stockinette and multiple layers of padding or foam. Patients simply don the Caresia and then, using a spiral or figure-eight wrapping style with 50% overlap, wrap over the top of the Caresia with short-stretch bandages. The short-stretch bandages should be applied to provide a snug fit, but not tight.

The unique foam chips used in every Caresia will help resolve tissue induration, stimulate interstitial fluid movement, and diffuse irregular wrapping pressures. Caresia with over-wrapping is much more comfortable and effective than standard bandaging for patients during the active phase of therapy.

Caresia decreases the patient's stress levels, thus increasing patient compliance. Solaris manipulates the insertion of foam chips to create a medial to lateral pressure differential to encourage interstitial fluid movement toward the collateral pathways.

Why does Caresia work?

1. Foam chips in Caresia Bandage Liners create localized tissue pressure differentials to stimulate interstitial fluid movement, prevent stagnation, and soften indurated tissue.
2. Caresia garments make wrapping a breeze for the inexperienced wrapper. Caresia is designed to disperse irregular bandage pressures, thus creating a more uniform, symmetrical shape to the limb, padding bony prominences, filling concave spaces and compensating for anatomical differences, which impair the distal to proximal gradient compression.
3. Caresia garments create localized tissue stretch, opening the initial lymphatic gaps to encourage reabsorption of interstitial fluids and particles.



Caresia Contraindications

- Arterial insufficiency or degeneration
- Deep Vein Thrombosis
- Untreated congestive heart failure, localized or systemic infection, or cancer
- Absent or severely impaired sensation

Table of Contents

- 2 About Caresia and Contraindications
- 3 Terms, Conditions and Warranties, Materials
- 4 How to Measure for Caresia
- 6 Arm Bandage Liners
- 7 Glove Bandage Liners
- 8 Gauntlet Bandage Liners
- 9 Below Knee Bandage Liners
- 10 Foot Bandage Liners
- 11 Thigh Bandage Liners



Customer Service

Telephone: 1-905-687-8500
Fax: 1-905-687-8224
Email: Info@LymphedemaDepot.com

Terms, Conditions, Returns, and Warranties

Terms: Net 30 days for established dealers accounts; contact us for an Account and Credit Application. All other orders require prepayment by cleared cheque or credit card.

Pricing: Please contact us for and refer to your Canadian pricelist. Note that all prices are subject to applicable Canadian sales taxes (Reg. #83343 7221). Prices are subject to change without prior notification.

Returns: Lymphedema Depot strives to provide the finest quality products and service; we will work with our customers to resolve any issue with our products. Please inspect your order promptly upon receipt. An order discrepancy or any product found defective at time of sale may be returned for exchange within 7 days of receipt with a pre-arranged return authorization. Orders cancelled after shipment will incur round-trip freight charges and a restocking fee. Shipping & handling is non-refundable. Custom-manufactured garments cannot be returned or cancelled once production has begun.

Warranties: In an effort to keep prices low, Solaris does not warrant Caresia products.

Materials

Meryl, Lycra, Polyurethane



“Caresia Bandage Liners are wonderful products that help patients transition out of cumbersome wrappings and achieve a higher level of comfort along the way. They are soft and pliable, which aids in ease of wear, and also patient-friendly allowing for product-user compliance. We are pleased to recommend the Caresia products that have provided much-needed relief and assistance to our patients.”

K. Anderson

How to Measure For Caresia.

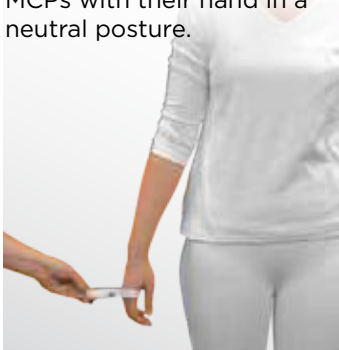
- Take measurements next to bare skin when possible
- Pull the tape snug, but without constriction
- Take measurements with your client in a supine position
- Call us at (905) 687-8500 with any questions



Measuring for Caresia Upper Extremity

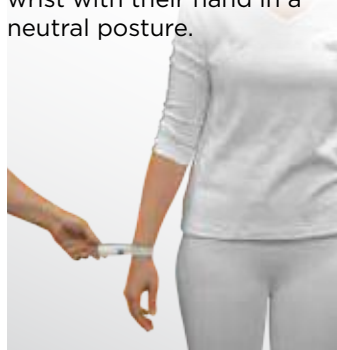
Palm Circumference

Measure around your client's MCPs with their hand in a neutral posture.



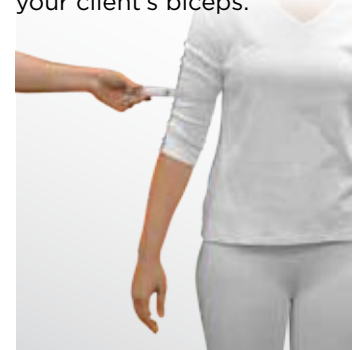
Wrist Circumference

Measure around your client's wrist with their hand in a neutral posture.



Biceps Circumference

Measure the largest girth of your client's biceps.



Measuring for Caresia Lower Extremity

Ankle Circumference

Measure the narrowest part of the ankle with the foot in neutral posture.



Calf Circumference

Measure the largest girth of your client's calf.



Below Knee Length

Measure the length from the bottom of your client's foot to the crease of the knee.



Groin Circumference

Measure the circumference of your client's thigh at the groin.



Thigh Length

Measure from the gluteal fold to the crease of the knee.





A. Caresia Arm Bandage Liner (MCPs to Axilla)

Caresia Arm Bandage Liners make multi-layered bandaging much easier, decreasing patient stress and increasing therapeutic results while giving patients independence in a shorter amount of time. Caresia's unique foam particles also help address tissue induration and pad irregularities.

Size	Arm	Palm Girth	Wrist Girth	Biceps Girth	Length	Item Code
Small	R	up to 19 cm	up to 16 cm	up to 30 cm	56 - 61 cm	CR-UE-BG-R-S
	L	up to 19 cm	up to 16 cm	up to 30 cm	56 - 61 cm	CR-UE-BG-L-S
Medium	R	up to 23 cm	up to 22 cm	up to 40 cm	56 - 61 cm	CR-UE-BG-R-M
	L	up to 23 cm	up to 22 cm	up to 40 cm	56 - 61 cm	CR-UE-BG-L-M
Large	R	up to 27 cm	up to 28 cm	up to 50 cm	56 - 61 cm	CR-UE-BG-R-L
	L	up to 27 cm	up to 28 cm	up to 50 cm	56 - 61 cm	CR-UE-BG-L-L



Wrist to Axilla with Gauntlet pictured

B. Caresia Arm Bandage Liner (Wrist to Axilla)

The newest product to the Caresia line, this Wrist to Axilla Bandage Liner was designed to provide clients with more options and is the perfect alternative for clients that want the ability to wrap their hand and arm separately.

Size	Arm	Wrist Girth	Biceps Girth	Length	Item Code
Small	R	up to 16 cm	up to 30 cm	45 - 50 cm	CR-UE-CG-R-S
	L	up to 16 cm	up to 30 cm	45 - 50 cm	CR-UE-CG-L-S
Medium	R	up to 22 cm	up to 40 cm	45 - 50 cm	CR-UE-CG-R-M
	L	up to 22 cm	up to 40 cm	45 - 50 cm	CR-UE-CG-L-M
Large	R	up to 28 cm	up to 50 cm	45 - 50 cm	CR-UE-CG-R-L
	L	up to 28 cm	up to 50 cm	45 - 50 cm	CR-UE-CG-L-L



C. Caresia Glove Bandage Liner

Caresia Glove Bandage Liners are excellent for those patients who have swelling and tissue induration in the digits. Every Caresia Glove has individual digit spacers to provide circumferential compression. Many therapists like to recommend this unit for their post-surgical hand patients and for patients with arthritis or lymphedema. Please note that functional hand usage will be restricted. Hand unit may be worn in conjunction with either of the Caresia Arm Bandage Liners.

Size	Palm Girth	Wrist Girth	Item Code
Small	up to 19 cm	up to 16 cm	CR-UE-AC-S
Medium	up to 23 cm	up to 22 cm	CR-UE-AC-M
Large	up to 27 cm	up to 28 cm	CR-UE-AC-L



D. Caresia Gauntlet Bandage Liner

A shortened version of the Caresia Glove, the Caresia Gauntlet Bandage Liner provides coverage to the PIPs to allow greater finger dexterity and functionality for everyday tasks. Each Caresia Gauntlet also incorporates individual digit spacers for swelling between the MCPs (knuckles). Like the Caresia Glove, the Gauntlet may also be worn with either of our Caresia Arm Bandage Liners.

Size	Palm Girth	Wrist Girth	Item Code
Small	up to 19 cm	up to 16 cm	CR-UE-BC-S
Medium	up to 23 cm	up to 22 cm	CR-UE-BC-M
Large	up to 27 cm	up to 28 cm	CR-UE-BC-L



A. Caresia Below Knee Bandage Liner

Caresia Below Knee Bandage Liners make multi-layered bandaging a breeze, helping clients gain independence in a shorter amount of time. Like all Caresia Bandage Liners, unique foam particles help address tissue induration and pad irregularities. Clients simply wrap over the top to achieve compression. For an even simpler solution, use our ReadyWrap products over the top instead of bandages.

Size	Ankle Girth	Calf Girth	Foot Length	Calf Length	Item Code
Short Small	22 - 28 cm	28 - 40 cm	20 - 25 cm	up to 41 cm	CR-LE-AD-S-S
Short Medium	28 - 34 cm	40 - 52 cm	25 - 30 cm	up to 41 cm	CR-LE-AD-S-M
Short Large	34 - 40 cm	52 - 64 cm	30 - 35 cm	up to 41 cm	CR-LE-AD-S-L
Avg Small	22 - 28 cm	28 - 40 cm	20 - 25 cm	41 - 47 cm	CR-LE-AD-A-S
Avg Medium	28 - 34 cm	40 - 52 cm	25 - 30 cm	41 - 47 cm	CR-LE-AD-A-M
Avg Large	34 - 40 cm	52 - 64 cm	30 - 35 cm	41 - 47 cm	CR-LE-AD-A-L
Tall Small	22 - 28 cm	28 - 40 cm	20 - 25 cm	47 - 53 cm	CR-LE-AD-T-S
Tall Medium	28 - 34 cm	40 - 52 cm	25 - 30 cm	47 - 53 cm	CR-LE-AD-T-M
Tall Large	34 - 40 cm	52 - 64 cm	30 - 35 cm	47 - 53 cm	CR-LE-AD-T-L



B. Caresia Foot Bandage Liner

Originally developed for a specific teenage client, the Solaris staff was so impressed with the garment's ability to resolve the daily discomfort of standing on hard cement floors that by week's end, 90% of the staff was donning these "comfy" boots and making more for friends and family. One family member with diabetes swears that the footwear has eliminated his foot pain and helped with his neuropathy. For the present, however, we are releasing the Caresia Foot Bandage Liner to address edema and lymphedema. Clients simply don the garment and wrap over the top with short-stretch bandages to provide compression. Each Caresia Foot Bandage Liner is sold individually.

Size	Ankle Girth	Foot Length	Item Code
Small	22 - 28 cm	20 - 25 cm	CR-LE-AB-S
Medium	28 - 34 cm	25 - 30 cm	CR-LE-AB-M
Large	34 - 40 cm	30 - 35 cm	CR-LE-AB-L



C. Caresia Thigh Bandage Liner

The Caresia Thigh Bandage Liner is the perfect supplement to our Caresia Below Knee Bandage Liner for clients with full leg swelling, or when used by itself for above knee swelling.

Size	Groin Girth	Knee to Groin Length	Item Code
Short Small	50 - 65 cm	23 - 28 cm	CR-LE-DG-S-S
Short Medium	65 - 80 cm	23 - 28 cm	CR-LE-DG-S-M
Short Large	80 - 95 cm	23 - 28 cm	CR-LE-DG-S-L
Avg Small	50 - 65 cm	28 - 33 cm	CR-LE-DG-A-S
Avg Medium	65 - 80 cm	28 - 33 cm	CR-LE-DG-A-M
Avg Large	80 - 95 cm	28 - 33 cm	CR-LE-DG-A-L
Tall Small	50 - 65 cm	33 - 38 cm	CR-LE-DG-T-S
Tall Medium	65 - 80 cm	33 - 38 cm	CR-LE-DG-T-M
Tall Large	80 - 95 cm	33 - 38 cm	CR-LE-DG-T-L

CARESIA

MANUFACTURED BY SOLARIS

Therapeutic Products To Simplify The Complex

Visit us at www.LymphedemaDepot.com



Follow us on:  facebook.com/lymphedemadepot

 twitter.com/lymphedemadepot

Lymphedema Depot Ltd.
Mail to: 12-111 Fourth Avenue, Suite 347
St. Catharines, ON L2S 3P5

Change Service Requested